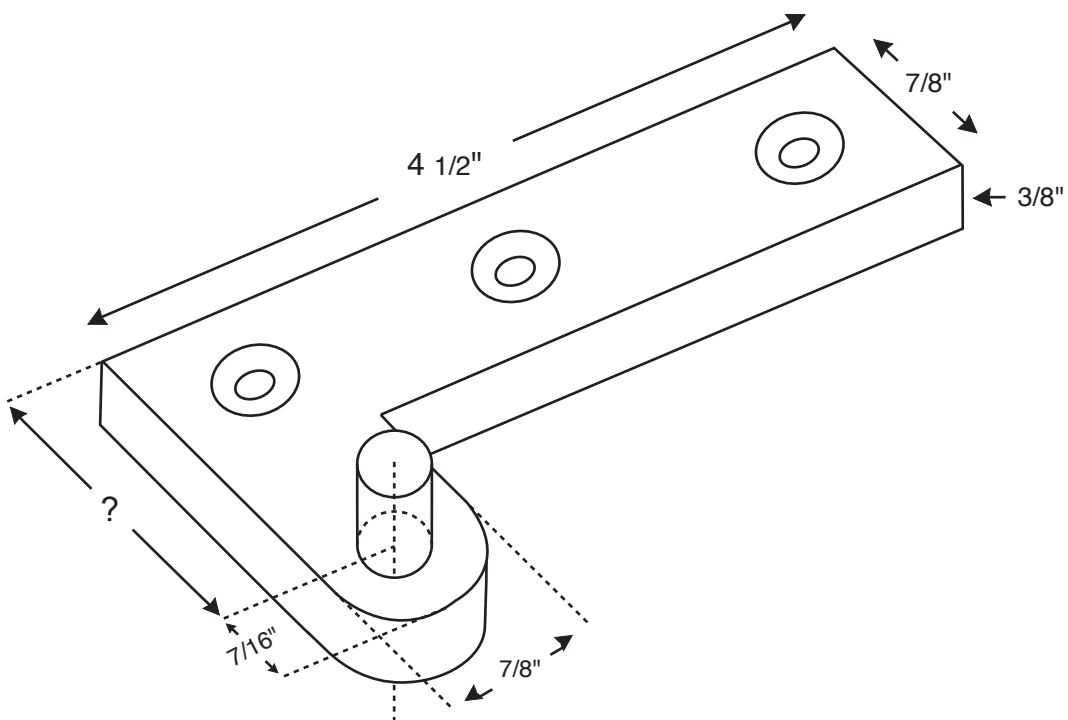


## B1



RIGHT HAND SHOWN  
Screw: 1 1/4 X 12

THRUST BEARINGS AND/OR  
NEEDLE BEARINGS ADDED FOR  
EXCESSIVE WEIGHT AND HEIGHT

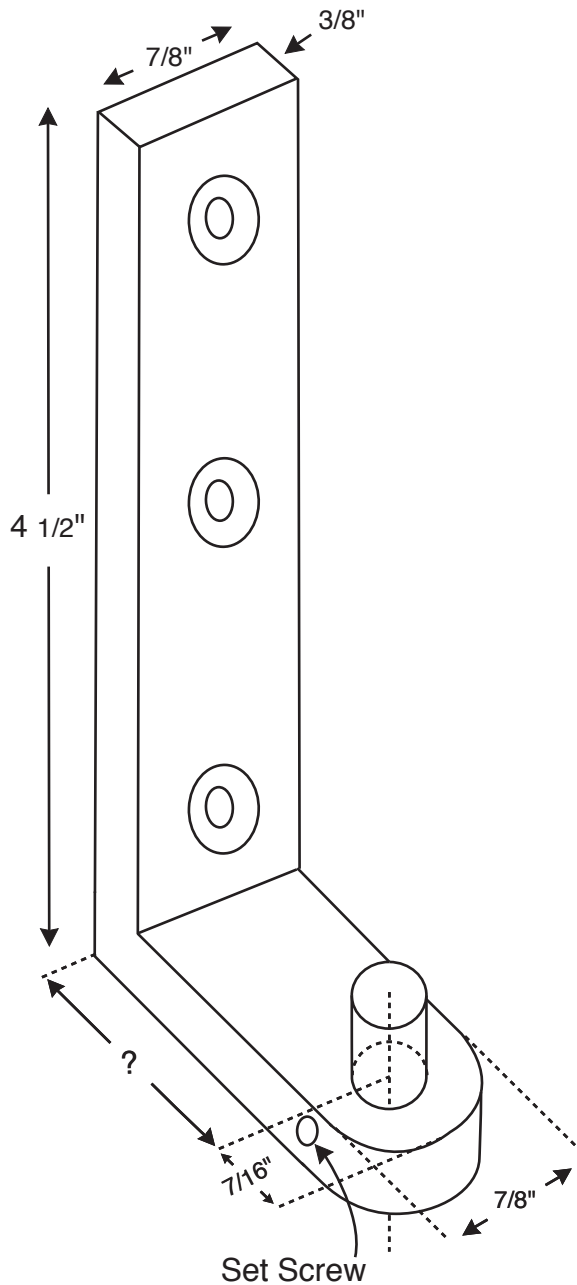
(?) Projection Determined by Job Condition

ALTERNATE FOR DOORS OVER 200 lbs.  
IS 1/2" X 1" STOCK - 1 1/2" X 14 SCREWS

ALL PIVOTS ARE MADE TO ORDER  
AND TO SUIT JOB CONDITION

B1 - Floor or Sill Offset Pivot Portion

## B2/B2i



May be used as intermediate

(See T4 / T4i)

REVERSE OF T4

THRUST BEARINGS AND/OR  
NEEDLE BEARINGS ADDED FOR  
EXCESSIVE WEIGHT AND HEIGHT

THIS PIECE SHOULD REST  
FLOOR OR BASE

LEFT HAND SHOWN  
Screw: 1 1/4 x 12

(?) Projection Determined by Job Condition

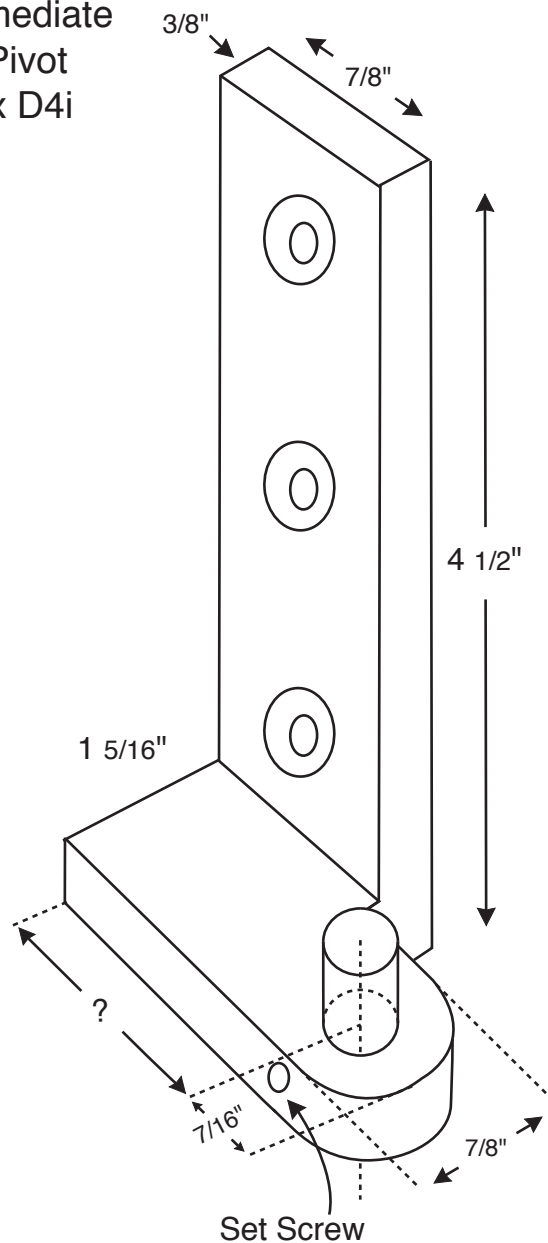
ALTERNATE FOR DOORS OVER 200 lbs.  
IS 1/2" X 1" STOCK - 1 1/2" X 14 SCREWS

ALL PIVOTS ARE MADE TO ORDER  
AND TO SUIT JOB CONDITION

B2/B2i - Bottom Back Jamb Pivot Portion

## B3 / B3i

B3i Is Used With D4i  
 As An Intermediate  
 Side Jamb Pivot  
 Set As: T5i x D4i



(See T5 / T5i)  
 REVERSE OF T5

THRUST BEARINGS AND/OR  
 NEEDLE BEARINGS ADDED FOR  
 EXCESSIVE WEIGHT AND HEIGHT

THIS PIECE SHOULD REST  
 FLOOR OR BASE

LEFT HAND SHOWN  
 Screw: 1 1/4 x 12

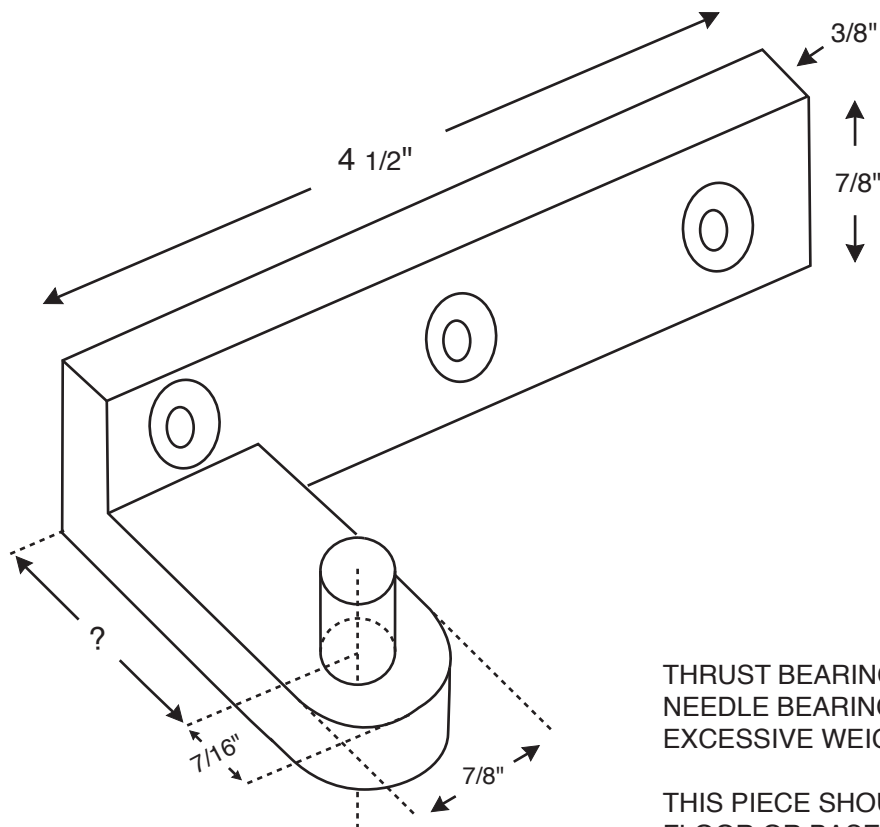
(?) Projection Determined by Job Condition

ALTERNATE FOR DOORS OVER 200 lbs.  
 IS 1/2" X 1" STOCK - 1 1/2" X 14 SCREWS

ALL PIVOTS ARE MADE TO ORDER  
 AND TO SUIT JOB CONDITION

B3/B3i - Bottom Side Jamb Pivot Portion

## B4



THRUST BEARINGS AND/OR  
NEEDLE BEARINGS ADDED FOR  
EXCESSIVE WEIGHT AND HEIGHT

THIS PIECE SHOULD REST ON  
FLOOR OR BASE

RIGHT HAND SHOWN  
Screw:  $1 \frac{1}{4}$  x 12

(?) Projection Determined by Job Condition

ALTERNATE FOR DOORS OVER 200 lbs.  
IS  $1 \frac{1}{2}$ " X 1" STOCK -  $1 \frac{1}{2}$ " X 14 SCREWS

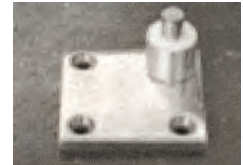
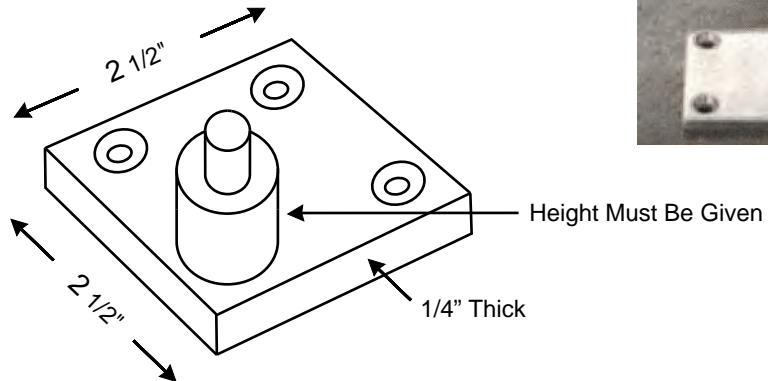
ALL PIVOTS ARE MADE TO ORDER  
AND TO SUIT JOB CONDITION

B4 - Bottom Pivot Portion

## CFP

### Carpet Floor Plate

Height of Carpet  
 Required

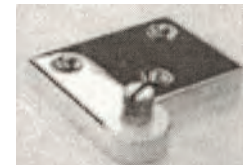
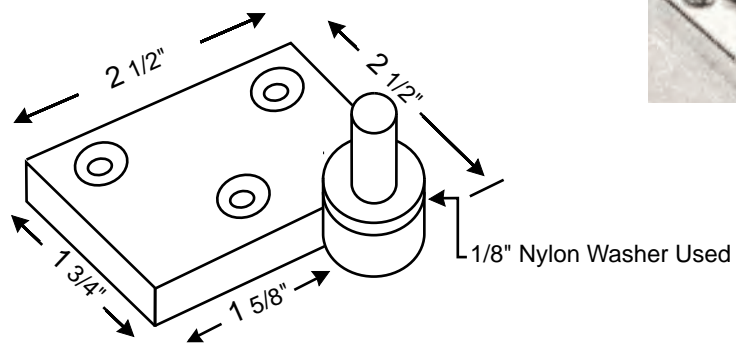


Also Made For 1/2" X 1" Heavy Duty Pivots

## WFP

### Wood Floor Plate

Undercut of door  
 Required

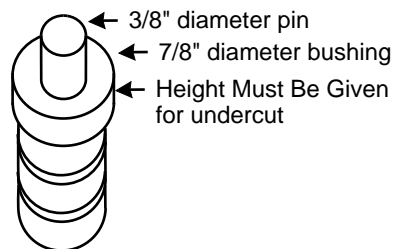


Also Made For 1/2" X 1" Heavy Duty Pivots

## STUD

### Stone, Marble, Tile, Concrete, Wood

Undercut of door  
 Required



Also Made For 1/2" X 1" Heavy Duty Pivots

Wood Floor Plate, Carpet Floor Plate, Stud for Stone, Marble or Wood.