



RJ759 Angle Pull
 Angle Pull w/Rear Return
 #RAJACK

1/16"

MATERIAL THICKNESS (THK)

5/8"

FRONT RETURN (FR)

3/4"

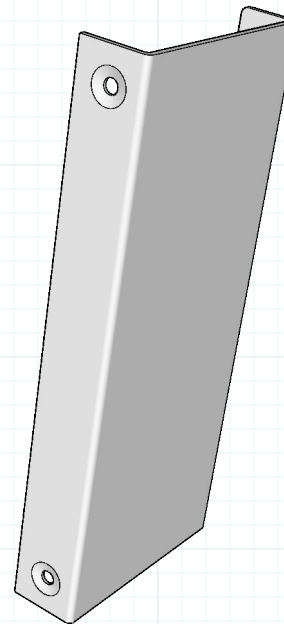
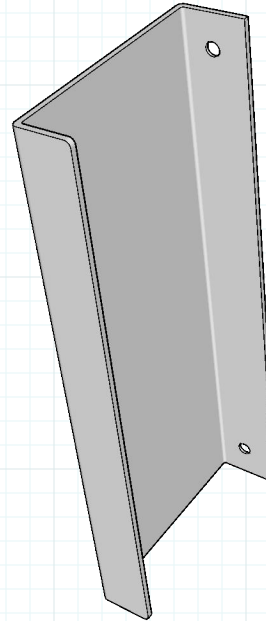
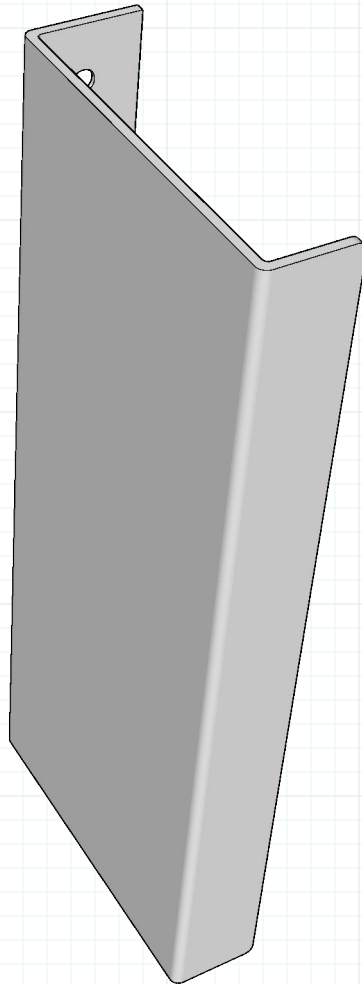
REAR RETURN (RR)

1-1/4" to 4-00"

MATERIAL PROJECTION (P)

1-1/2" up to 24"

MATERIAL OA LENGTH (L)



Finishes

- US03 Pol.Brass
- US03A Pol.Brass N/L
- US04 Satin Brass
- US04A Satin Brass N/L
- US05 Antique Brass
- US09 Polished Bronze
- US10 Satin Bronze
- US10A Dark Bronze
- US10B Oil Rubbed Bronze
- US14 Pol.Nickel
- US14A Pol.Nickel N/L
- US15 Satin Nickel
- US15A Satin Nickel N/L
- US19 Satin Black
- US26 Pol.Chrome
- US26D Satin Chrome

Powder Coating All RAL Colors

Match Your Sample

* RAJACK can match any custom or existing hardware finishes provided you submit a sample when placing order.



info@rajack.com

RAJACK HARDWARE
 95 Rome Street
 Farmingdale, NY 11735
 631-293-8273 Phone

RJ759-1



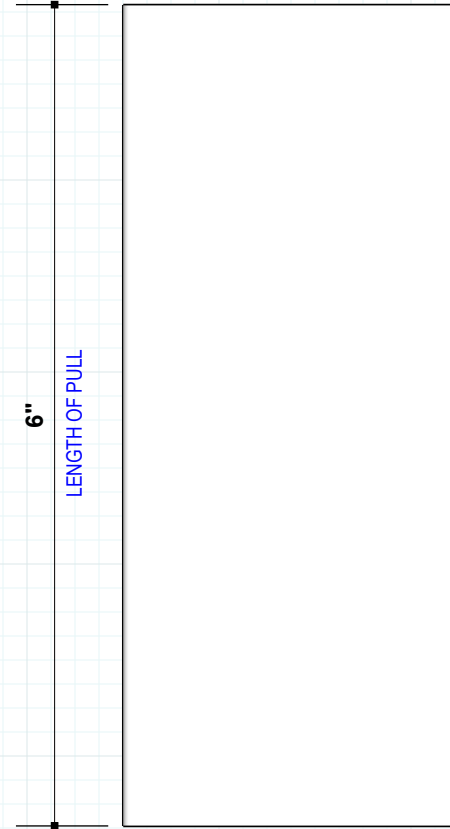
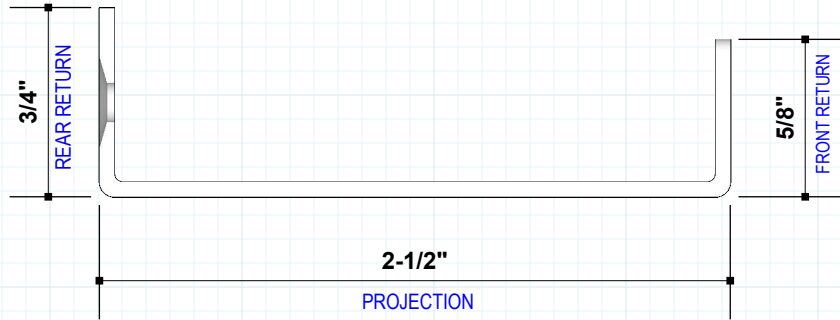


RJ759 Angle Pull

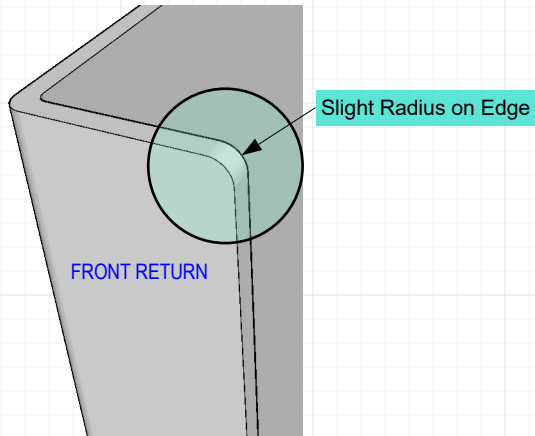
Angle Pull w/Rear Return

#RAJACK

6"L x 2-1/2"W Example Shown



In most cases screws on rear return only. Screws may be needed on side of pull depending on condition



1/16" Thick Material
 - Pulls larger than 6" may require more screw holes
 #6 x 1/2" Wood Screw

RJ759-2

RAJACK.com

 **rajackhardware**
 Follow us on Instagram

info@rajack.com

RAJACK HARDWARE
 95 Rome Street
 Farmingdale, NY 11735
 631-293-8273 Phone