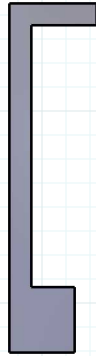
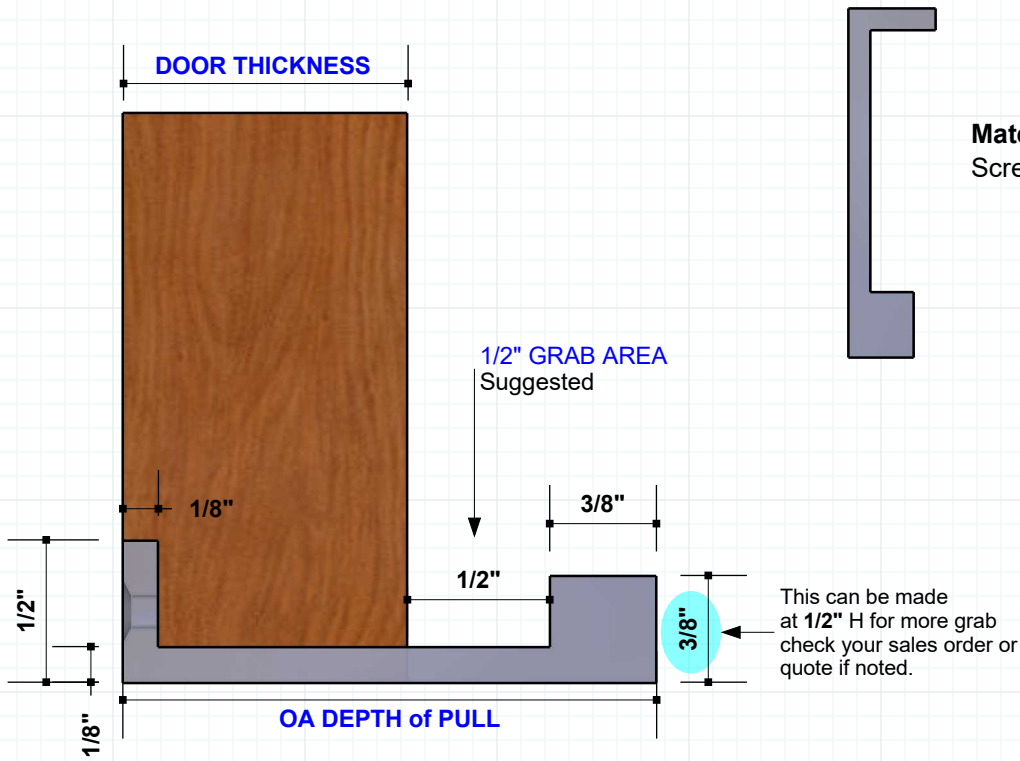




# RJ738 Square Tab Pull w/ Rear Return

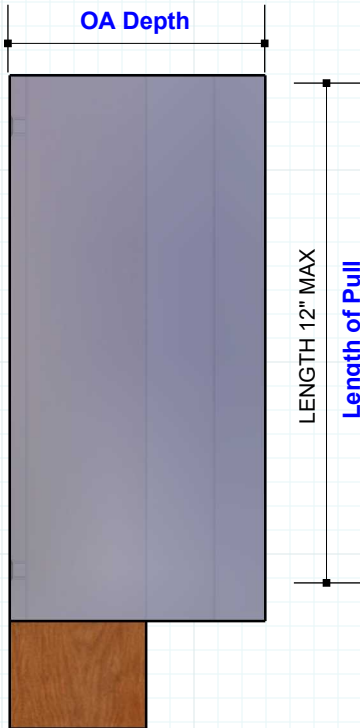
## Edge Pull

#RAJACK #RJ738



**Material Thickness 1/8"**  
Screw: #6 x 3/4" Philips Flat

This can be made at 1/2" H for more grab check your sales order or quote if noted.



- 12" Length is max length for this pull
- 1/2" grab area behind return is suggested and assumed unless otherwise specified.
- 1/2" Rear Return is max return size for this pull

Additional Screw holes may be needed depending on OA length of Pull

**Finishes**

- US03 Pol.Brass
- US03A Pol.Brass N/L
- US04 Satin Brass
- US04A Satin Brass N/L
- US05 Antique Brass
- US09 Polished Bronze
- US10 Satin Bronze
- US10A Dark Bronze
- US10B Oil Rubbed Bronze
- US14 Pol.Nickel
- US14A Pol.Nickel N/L
- US15 Satin Nickel
- US15A Satin Nickel N/L
- US19 Satin Black
- US26 Pol.Chrome
- US26D Satin Chrome

**Powder Coating**

**Match Your Sample**

\* RAJACK can match any custom or existing hardware finishes provided you submit a sample when placing order.



**info@rajack.com**

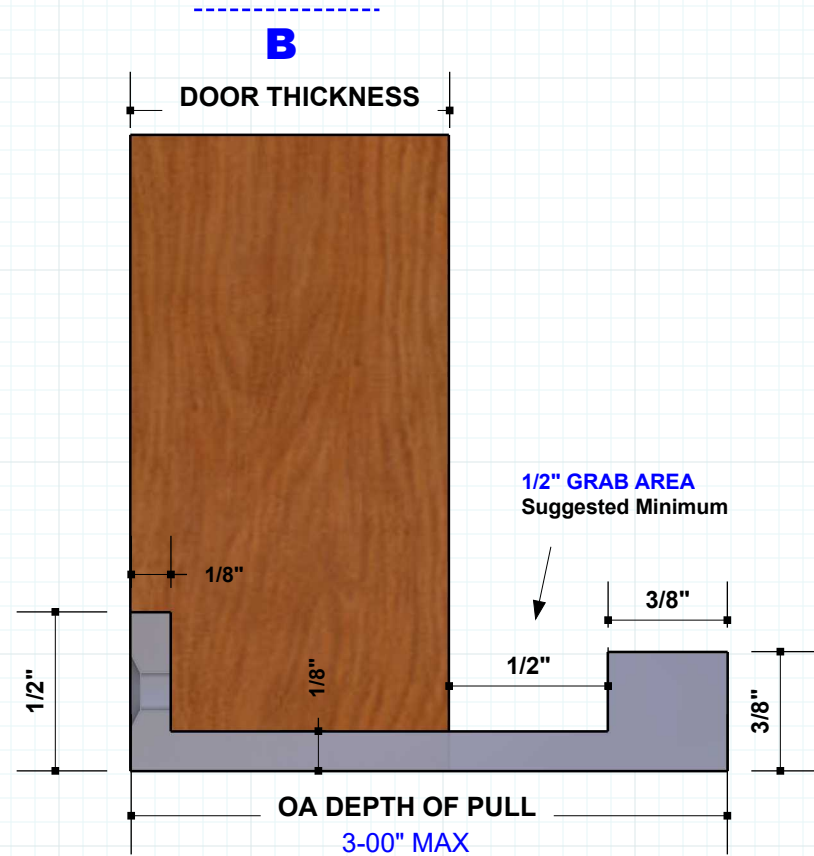
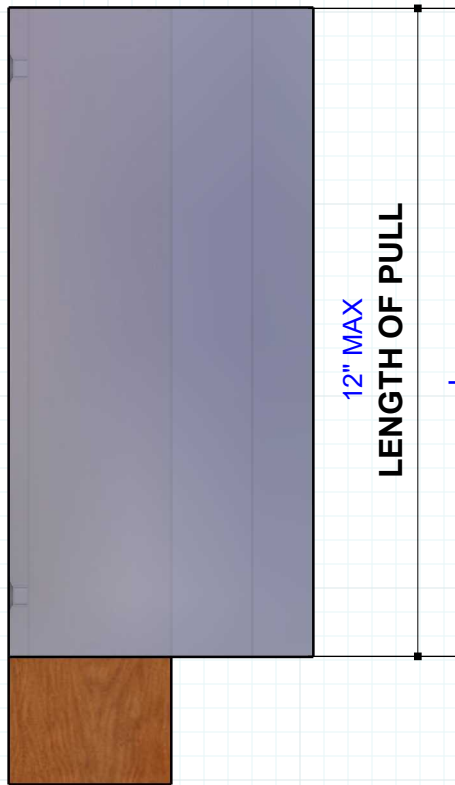
**RAJACK HARDWARE**  
95 Rome Street  
Farmingdale, NY 11735  
631-293-8273 Phone



**RJ738 Square Tab Pull w/ Rear Return**  
Edge Pull  
#RAJACK #RJ738

**ORDER WORKSHEET**

PO#/Ref:



- A: Length of Pull
- B: Door Thickness
- C: OA Depth of Pull
- D: Finish of Pull



**info@rajack.com**

**RAJACK HARDWARE**

95 Rome Street  
Farmingdale, NY 11735  
631-293-8273 Phone